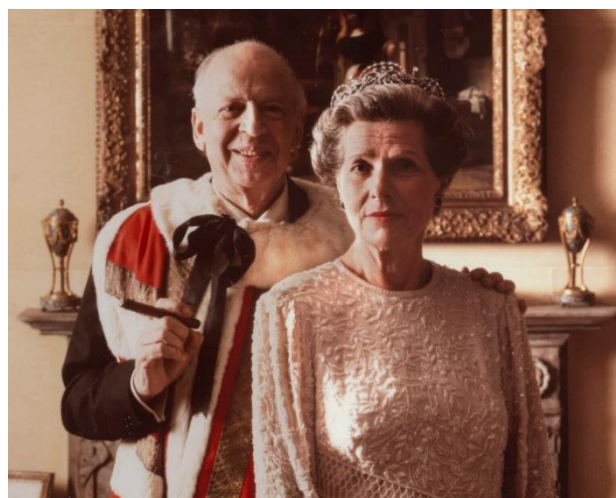
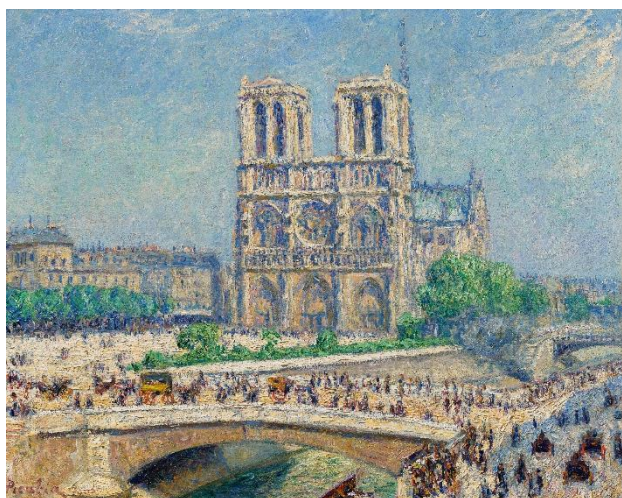


CHRISTIE'S

PRESS RELEASE | LONDON | TUESDAY, 19 APRIL 2022

THE COLLECTION OF THE LATE LORD AND LADY SWAYTHLING

London, 27 May 2022



Left: Francis Picabia (1879-1953), *Notre-Dame, effet de soleil*, 1906 (estimate: £200,000-300,000)
Right : The late Lord and Lady Swaythling, Private Collection

London – On Friday 27 May, Christie's will offer 170 lots from *The Collection of the late Lord and Lady Swaythling* in a live auction. David Montagu, 4th Lord Swaythling (1928-1998), had an illustrious career spanning the worlds of banking, racing, politics and media. The charming works being offered weave together fascinating strands of several notable family collections inherited by Lord Swaythling and his French wife Ninette (*née* Dreyfus) (1927-2021). Lord and Lady Swaythling established their own collection to which these inherited works were added, becoming part of their striking modern London residence and their country house in Newmarket. The sale comprises Impressionist and Modern paintings, Jewellery, Furniture, Decorative Arts and Silver, Old Master paintings, Chinese Ceramics and Works of Art. With estimates ranging from £300 to £300,000, the Collection is expected to realise in the region of £1 million. The sale is led by *Notre-Dame, effet de soleil* from 1906 by Francis Picabia (estimate: £200,000-300,000, *illustrated above*) which is part of a rare group of early works by the artist in the sale.

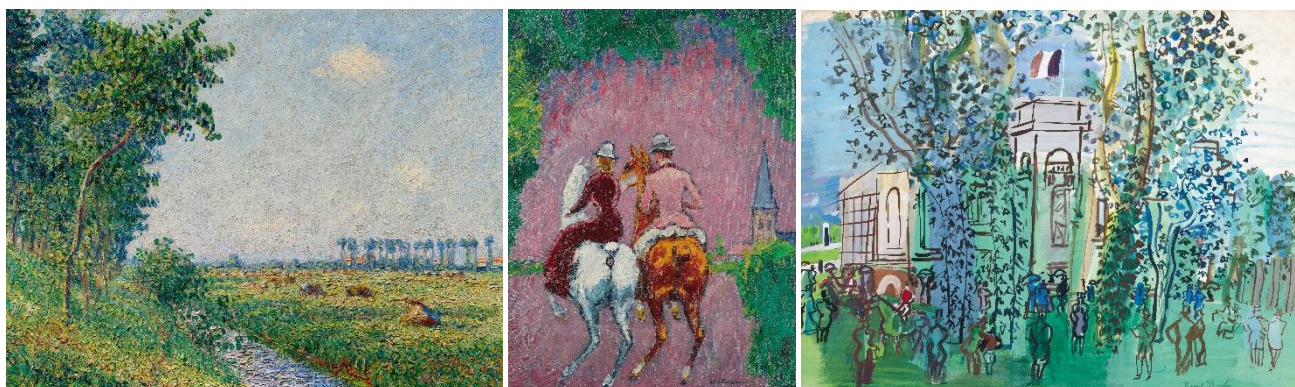
LORD SWAYTHLING

Lord Swaythling was a descendent of Benjamin Goldsmid (*circa* 1753-1808), a celebrated financier and friend of Lord Nelson, and the maternal grandson of the revered connoisseur collector The Hon. Nellie Ionides (*née* Samuel). He was Chairman of his family's banking firm Samuel Montagu & Co (1970-73), of Orion Bank (1974-79) and of Rothmans International plc (1988-98) and Director of J. Rothschild Holdings (1983-89). After taking up his seat in the House of Lords (1990-98) his maiden speech was in support of what would go on to become the War Crimes Act in 1991. With a keen

interest in racing and breeding horses, Lord Swaythling was a founding member of the British Horse Racing Board. Although he focused mostly on flat racing, perhaps his most famous racehorse – Zongalero – finished second in the 1979 Grand National. Involved in print media and television, he was a founding director of London Weekend Television, now part of ITV London, and held the position of director at *The Daily Telegraph* (1985-1996).

Charlotte Young, Specialist Head of Sale, Private and Iconic Collections commented: “*It is a privilege for Christie’s to be entrusted with the paintings, furniture and objets d’art which filled David and Ninette Montagu’s striking London residence, almost 100 years after Christie’s sold the 1st Lord Swaythling’s Renowned Collection of Silversmith’s Work in May 1924, previously on loan to the Victoria & Albert Museum. Many of the lots in the collection were inherited from the 1st Lord Swaythling, and the 4th Lord Swaythling’s grandmothers Gladys, Lady Swaythling and the Hon. Nellie Ionides. This sale provides the opportunity to acquire works of art with a fascinating history, some of which have been in the family for over two hundred years.*”

IMPRESSIONIST AND MODERN ART



A group of four early works by Francis Picabia from his Impressionist period – led by the magnificent *Notre-Dame, effet de soleil*, 1906 (estimate: £200,000-300,000, *illustrated page 1*) – were acquired directly by Lord and Lady Swaythling. Among the landscapes by Picabia, which adorned the Dining Room walls, is *Untitled (Vaches dans les pleins de Normandie)*, painted in 1905 (estimate: £40,000-60,000, *illustrated left*). Another highlight among the paintings is *Deux cavaliers au bois* by Kees van Dongen, which appealed to Lord Swaythling’s love of horses (estimate: £150,000-250,000, *illustrated centre*). It is one of a number of the Impressionist paintings inherited from Lord Swaythling’s mother, Mary Elliott-Blake (*née* Levy), along with *La Belle Irlandaise* by Jean-Louis Forain, *circa* 1890 (estimate: £20,000-30,000) and two watercolours by Raoul Dufy including *Le Pesage à Deauville*, *circa* 1930 (estimate: £25,000-35,000, *illustrated right*).

JEWELLERY



Among the forty lots of jewellery offered from the collection is the group of four Swaythling tiaras, led by an early 20th-century diamond and pearl tiara made by Koch, who supplied jewels to European

royal households (estimate: £80,000-120,000, *illustrated page two left*). The group also features a Belle Epoque diamond tiara (estimate: £15,000-20,000, *illustrated page two right and at the top of the release*). The other two tiaras both convert into necklaces: a 19th-century diamond fringe example with old cushion-shaped diamonds (estimate: £30,000-50,000) and a late 19th-century tourmaline and diamond example dating to the 1890s (estimate: £15,000-20,000).

HORSES



In addition to the van Dongen painting illustrated above, further connections to horse racing include, *from left to right*: a George III gilt-metal-mounted enamel oval snuff-box, Bilston, 1769, inscribed 'Gimcrack - Robert Collins 1769', inherited from the collection of the Hon. Nellie Ionides (1883-1962), from Buxted Park, Sussex (estimate: £2,000-4,000); two 19th-century bridle and harness designs from a group of thirteen (estimate: £700-1, 000); and a bronze of a galloping racehorse with jockey, 1997, by Philip Blacker (estimate: £1,500-2,500).

OLD MASTER PAINTINGS



The star amongst a group of three family portraits by Arthur William Devis is a monumental group portrait of the children of the financier Benjamin Goldsmid, painted in 1800 (estimate: £80,000-120,000, *illustrated left*), inherited by Lord Swaythling by descent from his grandmother, Gladys Montagu (*née* Goldsmid) (1879-1965). Thought to have been commissioned as a centrepiece for their newly built home, Elm Grove, Roehampton, the dog's collar is inscribed 'Roehampton'. It is rare for three commissioned works by the same artist to remain in the original family for over two centuries. Also included is a *Portrait of Benjamin Goldsmid* by Sir William Beechey (estimate: £3,000-5,000, *illustrated above centre*).

A maid pumping water in a kitchen interior by Cornelis Bisschop (estimate: £50,000-80,000, *illustrated right*), is a remarkable painting from the collection of Samuel Montagu, 1st Lord Swaythling (1832-1911), whose main residences were an Italianate mansion on Kensington Palace Gardens and South Stoneham House, Swaythling, Southampton. Amongst his collection was *Stratford Mill on the Stour* by John Constable, now in the National Gallery in London.

FURNITURE



Much of the furniture offered comes from Lord Swaythling's maternal grandmother The Hon. Nellie Ionides (1883-1962), who was introduced to her second husband the interior designer and architect Basil Ionides through a mutual friend, furniture historian Margaret Jourdain. The Ionides shared a passion for collecting and together embarked upon rescuing Buxted Park, Sussex from dereliction in the 1930s. Their efforts were celebrated by Christopher Hussey in *Country Life* in 1934 and 1950, (following further restoration after a fire in 1940); the images enable a number of the furniture lots being offered to be traced back to Buxted, including: a handsome George III marquetry commode, attributed to Henry Hill (estimate: £25,000-40,000, *illustrated left*); a set of six George III polychrome-decorated armchairs (estimate: £12,000-18,000, *illustrated above*) and a George III polychrome-decorated satinwood dressing-commode (estimate: £12,000-18,000, *illustrated right*).

DECORATIVE ARTS AND SILVER



Nellie Ionides' collections included an important group of English 18th century enamels, eighty of which are included in this sale. Her enamel collection was formerly at Berkeley Square and later moved to Buxted for safety during the Blitz. Mrs. Ionides' interest in enamels cemented a friendship with H.M. Queen Mary, who was also an avid enamel collector; both collections were featured in T. and B. Hughes, *English Painted Enamels* in 1951. The group includes a rare example of a painted enamel vase-shaped wall-clock, *circa* 1765 (estimate: £6,000-10,000, *illustrated far left*). The breadth of the decorative arts and silver is reflected by other works offered, from left to right: Chinese green enamelled dragon dishes, Daoguang six-character seal marks (estimate: £8,000-12,000); a Chelsea-Derby porcelain part dessert-service, *circa* 1780, (estimate : £2,000-3,000) formerly in the collection of the 9th Duke of Hamilton, and a George III silver epergne, *mark of Robert Hennell, London, 1781* (estimate: £8,000-12,000) acquired by the 1st Lord Swaythling over one hundred years ago.

To view the sale as a whole, please visit [Christies.com](https://www.christies.com)

PRESS CONTACTS:

Hannah Schweiger | +44 (0) 207 389 2964 | hschweiger@christies.com

About Christie's

Founded in 1766, Christie's is a world-leading art and luxury business. Renowned and trusted for its expert live and online auctions, as well as its bespoke private sales, Christie's offers a full portfolio of [global services](#) to its clients, including art appraisal, art financing, international real estate and education. Christie's has a physical presence in 46 countries, throughout the Americas, Europe, Middle East, and Asia Pacific, with flagship [international sales hubs](#) in New York, London, Hong Kong, Paris and Geneva. It also is the only international auction house authorized to hold sales in mainland China (Shanghai).

Christie's [auctions](#) span more than [80 art and luxury categories](#), at price points ranging from \$200 to over \$100 million. In recent years, Christie's has achieved the world record price for an artwork at auction (Leonardo da Vinci's *Salvator Mundi*, 2017), for a single collection sale (the Collection of Peggy and David Rockefeller, 2018), and for a work by a living artist (Jeff Koons' *Rabbit*, 2019).

Christie's [Private Sales](#) offers a seamless service for buying and selling art, jewellery and watches outside of the auction calendar, working exclusively with Christie's specialists at a client's individual pace.

Recent innovations at Christie's include the groundbreaking sale of the first NFT for a digital work of art ever offered at a major auction house (Beeple's *Everydays*, March 2021), with the unprecedented acceptance of cryptocurrency as a means of payment. As an industry leader in digital innovation, Christie's also continues to pioneer new technologies that are redefining the business of art, including the creation of viewing and bidding experiences that integrate augmented reality, global livestreaming, buy-now channels, and hybrid sales formats.

Christie's is dedicated to advancing [responsible culture](#) throughout its business and communities worldwide, including achieving sustainability through net zero carbon emissions by 2030, and actively using its platform in the art world to amplify under-represented voices and support positive change.

Browse, bid, [discover](#), and join us for the best of art and luxury at: www.christies.com or by downloading Christie's apps.

The COVID-related re-opening status of our global locations is available [here](#)

**Please note when quoting estimates above that other fees will apply in addition to the hammer price - see Section D of the Conditions of Sale at the back of the sale catalogue.*

**Estimates do not include buyer's premium. Sales totals are hammer price plus buyer's premium and are reported net of applicable fees.*

###

Images available on request

FOLLOW CHRISTIE'S ON:

