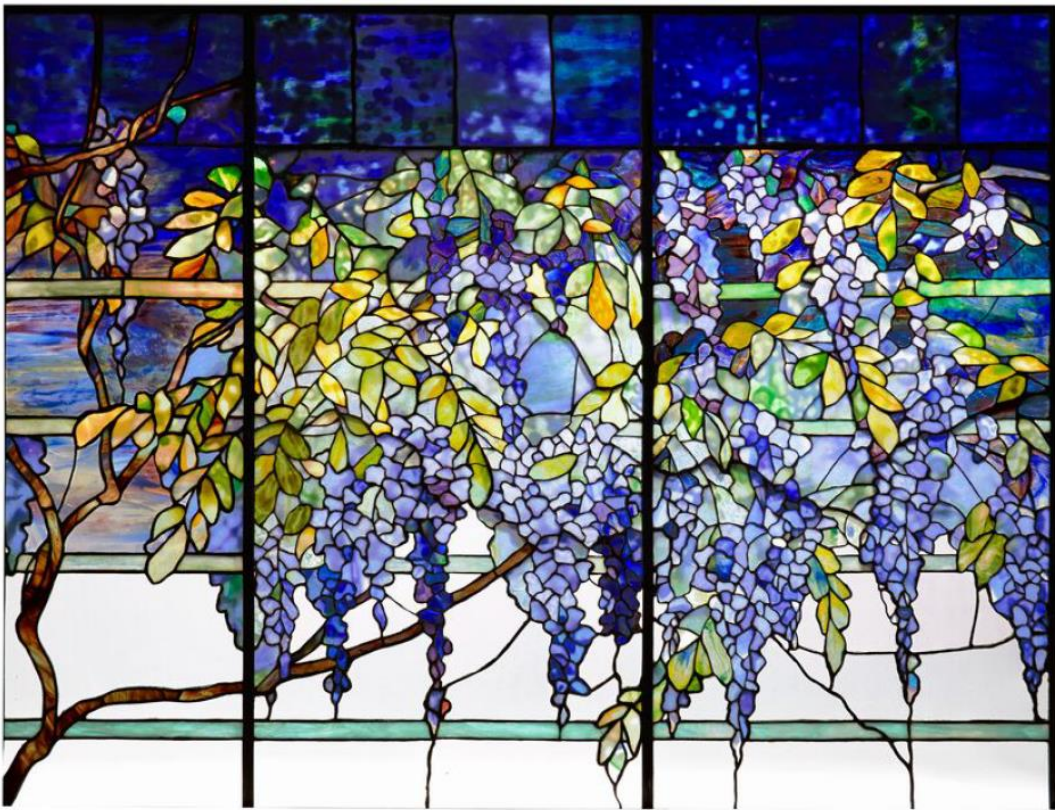


# CHRISTIE'S

PRESS RELEASE | NEW YORK | FOR IMMEDIATE RELEASE: 24 MAY 2022

## CHRISTIE'S PRESENTS TIFFANY MASTERWORKS FROM THE GARDEN MUSEUM A PRIVATE COLLECTION



### TIFFANY STUDIOS

IMPORTANT 'WISTERIA' TRANSOM WINDOW FROM THE DINING ROOM OF LOUIS COMFORT TIFFANY'S PRIVATE ESTATE, LAURELTON HALL, LONG ISLAND, CIRCA 1905 leaded glass 35 in. (88.9 cm) high, 46½ in. (118.1 cm) wide (sight)  
\$700,000-1,000,000

New York – A celebration of the titan of American design at the turn of the century, Christie's will offer [Tiffany Masterworks from the Garden Museum: A Private Collection](#) in a live sale on Friday 10 June 2022 at Rockefeller Center. The dedicated single-owner sale presents one of the greatest Tiffany collections in existence amassed in the 1990s by Japanese businessman Mr. Takeo Horiuchi who endeavored to open a museum devoted to the American artist and designer, Louis Comfort Tiffany.

The sale is led by the historically significant 'Wisteria' Transom Window from Louis C. Tiffany's Long Island estate, the acclaimed Laurelton Hall (estimate: \$700,000-1,000,000), the only remaining window from the iconic 7-pane transom in private hands. Additional important windows in the collection include the renown 'Peacock' Window which was recently exhibited in *A Radiant Light: The Artistry of Louis C.*

*Tiffany* at SFO Museum in San Francisco (estimate: \$200,000-300,000), and the 'Clematis' skylights from the Harvey S. Firestone residence in Akron, Ohio (estimate: \$300,000-500,000).

Other highlights include the stunning 'Yellow Rose' floor lamp (estimate: \$600,000-800,000), a rare and early 'Dragonfly and Waterflowers' table lamp (estimate: \$350,000-500,000), formerly in the collection of Barbra Streisand, and the superb 'Elaborate Grape' table lamp (estimate: \$300,000-500,000).

The sale selection also offers the best of every artistic and decorative medium produced by Louis Comfort Tiffany, with examples of Tiffany's works on paper such as 'Roccabrunna' (estimate: \$10,000-15,000), and designs by his burgeoning interior decorating firm and artist collaborative, Associated Artists, which designed for the William Kimball Manor, Rochester, New York, and for the George Kemp Residence on Fifth Avenue in Manhattan. Further highlights represented are memorabilia from the Tiffany Studios workshop, including original shade forms and worker's tools, employee ledgers and a copy of the significant 1946 auction catalog, *Extensive Collection of the Louis Comfort Tiffany Foundation, Laurelton Hall*, sold at Parke-Bernet Galleries.

**Daphné Riou, Head of Christie's Design Department**, comments: *"The Garden Museum is one of the greatest and most legendary collections of Tiffany to come to the market in recent years. Ranging from masterworks such as the Wisteria window from Laurelton Hall, the only panel from this transom remaining in private hands, or the spectacular 'Hanging Head Dragonfly' chandelier in blue rippled glass, to furniture, enamels, paintings and workshop tools, the collection spans much of Tiffany's history and artistic development. Christie's is deeply honored to present this collection at auction."*

Spanning Christie's Luxury Week sales, the entire collection will be on public preview at Christie's Galleries at 20 Rockefeller Plaza from 2-10 June 2022. The sale will take place live at Rockefeller Center on Friday, 10 June 2022 at 2pm.

### Highlights include:



TIFFANY & CO.  
IMPORTANT VASE, 1911  
22K gold, champlevé and plique-à-jour enamel  
10¾ in. (27.3 cm) high, 3½ in. (8.9 cm) diameter  
\$40,000-60,000



TIFFANY STUDIOS  
IMPORTANT AND RARE 'HANGING HEAD DRAGONFLY'  
CHANDELIER, CIRCA 1905  
with original hanging fixture  
10½ in. (26.7 cm) high, 28 in. (71.1 cm) diameter, 60 in. (152.4 cm)  
\$600,000-800,000

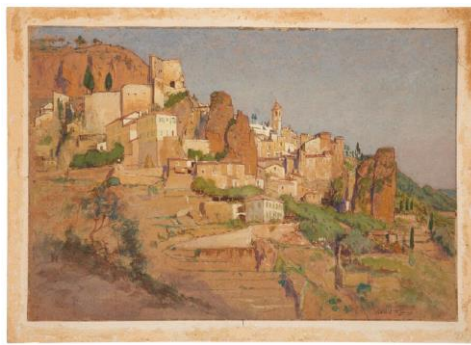


TIFFANY STUDIOS  
WORKBENCH AND TOOLS FROM  
THE FORMER COLLECTION OF  
JOHN DIKEMAN, CIRCA 1932  
33 x 28 x 45 in. (83.8 x 71.1 x 114.3 cm)  
\$50,000-70,000





TIFFANY STUDIOS  
*'PEACOCK' WINDOW, CIRCA 1910-1915*  
Favrile glass 31 in. (78.7 cm) high,  
22 $\frac{7}{8}$  in. (58.1 cm) wide (sight)  
\$200,000-300,000



LOUIS COMFORT TIFFANY (1848-1933)  
*'ROCCABRUNNA', 1874*  
watercolor, gouache, and ink on paper laid on board  
14 x 20 $\frac{1}{2}$  in. (35.6 x 52.1 cm) (unframed)  
\$10,000-15,000



TIFFANY STUDIOS  
*RARE 'ELABORATE GRAPE' TABLE LAMP, CIRCA 1903*  
leaded glass, patinated bronze 27 in. (68.6 cm) high, 18 in. (45.7 cm) diameter of shade  
\$300,000-500,000



TIFFANY STUDIOS  
*EARLY AND RARE 'DRAGONFLY AND WATERFLOWERS' TABLE LAMP, CIRCA 1900*  
leaded glass, mosaic Favrile glass, patinated bronze  
17 $\frac{3}{4}$  in. (45.1 cm) high, 16 in. (40.6 cm) diameter of shade  
\$350,000-500,000



LOUIS C. TIFFANY AND ASSOCIATED ARTISTS  
*DROP-LEAF PARTNER'S DESK FOR THE WILLIAM S. KIMBALL RESIDENCE, ROCHESTER, NEW YORK, CIRCA 1881*  
canary wood, teak, patinated copper  
30 $\frac{1}{4}$  x 84 $\frac{3}{8}$  x 36 in. (76.8 x 214.3 x 91.4 cm) (extended) 50 $\frac{1}{2}$  in. wide (128.3 cm) (unextended)  
\$40,000-60,000



TIFFANY STUDIOS  
*RARE 'YELLOW ROSE' FLOOR LAMP, CIRCA 1905*  
leaded glass, gilt bronze 78 $\frac{1}{2}$  in. (199.4 cm) high, 26 in. (66 cm) diameter of shade  
\$600,000-800,000

## PRESS CONTACT:

Jessica Stanley | + 1 212 636 2680 | [jstanley@christies.com](mailto:jstanley@christies.com)

### About Christie's

Founded in 1766, Christie's is a world-leading art and luxury business. Renowned and trusted for its expert live and online auctions, as well as its bespoke private sales, Christie's offers a full portfolio of [global services](#) to its clients, including art appraisal, art financing, international real estate and education. Christie's has a physical presence in 46 countries, throughout the Americas, Europe, Middle East, and Asia Pacific, with flagship [international sales hubs](#) in New York, London, Hong Kong, Paris and Geneva. It also is the only international auction house authorized to hold sales in mainland China (Shanghai).

Christie's [auctions](#) span more than [80 art and luxury categories](#), at price points ranging from \$200 to over \$100 million. In recent years, Christie's has achieved the world record price for an artwork at auction (Leonardo da Vinci's *Salvator Mundi*, 2017), for a single collection sale (the Collection of Peggy and David Rockefeller, 2018), and for a work by a living artist (Jeff Koons' *Rabbit*, 2019).

Christie's [Private Sales](#) offers a seamless service for buying and selling art, jewellery and watches outside of the auction calendar, working exclusively with Christie's specialists at a client's individual pace.

Recent innovations at Christie's include the groundbreaking sale of the first NFT for a digital work of art ever offered at a major auction house (Beeple's *Everydays*, March 2021), with the unprecedented acceptance of cryptocurrency as a means of payment. As an industry leader in digital innovation, Christie's also continues to pioneer new technologies that are redefining the business of art, including the creation of viewing and bidding experiences that integrate augmented reality, global livestreaming, buy-now channels, and hybrid sales formats.

Christie's is dedicated to advancing [responsible culture](#) throughout its business and communities worldwide, including achieving sustainability through net zero carbon emissions by 2030, and actively using its platform in the art world to amplify under-represented voices and support positive change.

Browse, bid, [discover](#), and join us for the best of art and luxury at: [www.christies.com](http://www.christies.com) or by downloading Christie's apps. The COVID-related re-opening status of our global locations is available [here](#).

###

FOLLOW CHRISTIE'S ON:

