

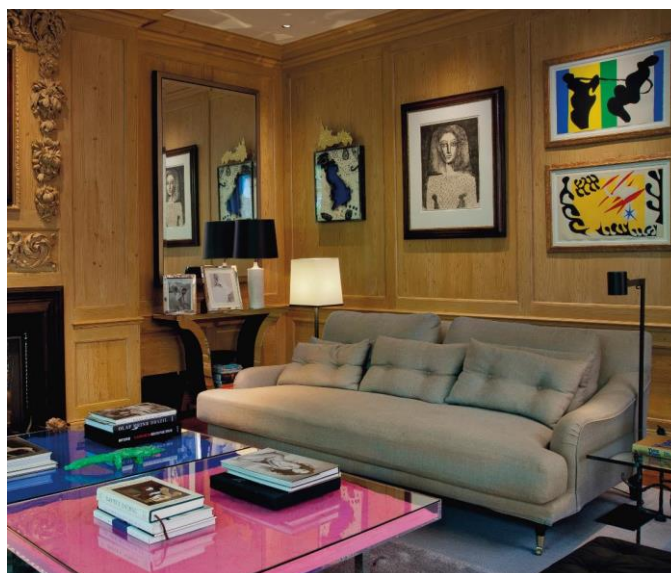
CHRISTIE'S

THE ART PEOPLE

PRESS RELEASE | LONDON | 28 October 2015

WORKS FROM THE HOME OF STING & TRUDIE STYLER

TO BE OFFERED AT
CHRISTIE'S KING STREET ON 24 FEBRUARY 2016



London – *Queen Anne's Gate:* Works from the Art Collection of Sting & Trudie Styler will be offered at auction at Christie's in London on 24 February 2016. Formed over the past 20 years and lovingly housed in their former family home at Queen Anne's Gate in London, the collection vividly captures the couple's knowledge and passion for Art and Design. Over 150 lots will be offered from the collection, which represent remarkable quality and breadth – from the subtle tones of the geometric abstracts by Ben Nicholson and Alan Reynolds and striking Mapplethorpe photographs to sophisticated 20th century furniture and lighting that complement the vibrant colours of Matisse's *Jazz* series and the playfulness of ceramics by Picasso. This sale marks a wonderful opportunity for new and established collectors to choose from an inspiring array of works with notable provenance, collected with passion and knowledge. Estimates range from £1,000 to £500,000.

Andy Waters, Senior Director, Head of Private Collection Sales, Christie's London: *"Having been entrusted with many of the greatest private collections assembled by some of the most notable figures throughout history, Christie's is honoured to be offering for sale works from the Art Collection of Sting & Trudie Styler. Their home at Queen Anne's Gate effortlessly combined luxury, rarity and colour - a skilful balance that created the ultimate London home. Each work of art was carefully chosen and the resulting collection is a testament to Sting and Trudie Styler's informed eye for Art and Design. Alongside works by Matisse, Picasso, Mapplethorpe and Nicholson, the collection includes Sting's Steinway piano, which occupied pride of place in the music room at Queen Anne's Gate."*

20TH CENTURY ART



The collection features a number of important works by the great artists of the 20th and 21st centuries, led by Ben Nicholson's *March 55 (amethyst)* (estimate: £300,000-500,000, *illustrated left*). Painted in 1955, this work dates to a crucial phase in Nicholson's work, between the late 1940s and early 1950s, which secured him a position as the leading British abstract painter on the international stage. The present lot exemplifies his harmonious combination of fluid drawing and a relatively muted palette, using washes of colour to add subtle forms to the composition.



Henri Matisse's *Jazz* portfolio is a celebration of life and a riot of pure colour and form (estimate: £250,000-350,000, *illustrated right*). Created in 1947, it marks a radical departure from the artist's previous work and is today considered one of the greatest and most influential print series of the 20th century.

Works by other masters of modern art include Pablo Picasso's lithograph *Le Corsage à Carreaux*, 1949 (estimate: £30,000-50,000, *illustrated right*), and prints by Georges Braque and René Magritte. Among the contemporary prints selection are pieces by artists of the present day, Mimmo Paladino and Carsten Holler, among others.



A highlight from the selection of drawings is Gustav Klimt's *Study of a Young Woman in Stockings* (estimate: £25,000-40,000). Depicting a striding female nude in her stockings, this work is from a series of drawings of the human figure in movement that Klimt completed in 1906-1907.

POST-WAR AND CONTEMPORARY ART



Contemporary highlights include Keith Haring's *Untitled* (estimate: £70,000-100,000, *illustrated left*) and Zeng Chuanxing's *Paper Bride, Grey Mood* (estimate: £30,000-50,000, *illustrated right*), both iconic works from the art movements they represent. Indeed the carefully selected works within this collection act as key examples of the zeitgeists within which each artist worked. Executed in 1984 and derived from his subway vernacular, Haring's figures are archetypal of the energy and emerging art scene of the 1980s

that he championed alongside his contemporary Jean-Michel Basquiat. Twenty years later in the Post-Cultural Revolution era, Zeng Chuanxing's *Paper Bride, Grey Mood* displays the heavy influences of western iconography on the emerging contemporary art scene of China in the 2000s. Of the striking photographs on offer by Robert Mapplethorpe, which revel in the sensual quality of nature, a highlight is *Calla Lilies*, 1983 (estimate: £30,000-50,000).



YOUNG CONTEMPORARY ARTISTS

Sting and Trudie Styler's support for young contemporary artists is also reflected in the collection, with direct commissions from the Russian artist Veronica Smirnoff and British artist Emily Allchurch. Smirnoff's striking series of panels, *A Winter's Tale*, (a selection *illustrated left*) were conceived for the staircase at Queen Anne's Gate. They explore themes of Russian folklore, historical landscape painting and fantasy, a theme which is also central to Allchurch's piece, *Ideal City (after della Francesca)*, which features the Queen Anne's Gate home in a complex imagined cityscape.

ICONIC NAMES OF DECORATIVE ARTS AND DESIGN



In addition the 20th century design in the collection comprises works by important Post-War masters including Yves Klein. Radiating with the artist's signature pigments *Table Rose* (estimate: £20,000-30,000, *illustrated right*) and *Table bleue* (estimate: £20,000-30,000, *illustrated left*) are a testament to Yves Klein's relationship with colour and its 'infinite presence'



and the emotive reaction it had the power to evoke. Other significant pieces include an exquisite Line Vautrin 'Soleil A Pointes' mirror, furniture by Jacques Adnet and George Nakashima, and Jean Besnard ceramics.

AUCTION

Wednesday 24 February 2016
8 King Street, St. James's
London SW1Y 6QT

About Christie's

Christie's, the world's leading art business, had global auction, private and digital sales in 2015 that totalled £4.8 billion / \$7.4 billion. Christie's is a name and place that speaks of extraordinary art, unparalleled service and expertise, as well as international glamour. 2016 marks Christie's 250th anniversary. Founded in 1766 by James Christie, Christie's has since conducted the greatest and most celebrated auctions through the centuries providing a popular showcase for the unique and the beautiful. Christie's offers around 350 auctions annually in over 80 categories, including all areas of fine and decorative arts, jewellery, photographs, collectibles, wine, and more. Prices range from \$200 to over \$100 million. Christie's also has a long and successful history conducting private sales for its clients in all categories, with emphasis on Post-War & Contemporary, Impressionist & Modern, Old Masters and Jewellery.

Christie's has a global presence with 54 offices in 32 countries and 12 salerooms around the world including in London, New York, Paris, Geneva, Milan, Amsterdam, Dubai, Zürich, Hong Kong, Shanghai, and Mumbai. More recently, Christie's has led the market with expanded initiatives in growth markets such as Russia, China, India and the United Arab Emirates, with successful sales and exhibitions in Beijing, Mumbai and Dubai.

**Estimates do not include buyer's premium. Sales totals are hammer price plus buyer's premium and do not reflect costs, financing fees or application of buyer's or seller's credits.*

PRESS CONTACT: Katie Carder | +44 (0) 207 389 2283 | kcarder@christies.com

Estimates do not include buyer's premium. Sales totals are hammer price plus buyer's premium and do not reflect costs, financing fees or application of buyer's or seller's credits.

Visit Christie's Website at www.christies.com