

# CHRISTIE'S

PRESS RELEASE | NEW YORK | FOR IMMEDIATE RELEASE: 10 OCTOBER 2022

## THE COLLECTION OF THOMAS AND DORIS AMMANN WILL HIGHLIGHT NEW YORK MARQUEE WEEK

SOLD ACROSS 20<sup>TH</sup> & 21<sup>ST</sup> CENTURY EVENING SALES AND POST-WAR AND CONTEMPORARY ART DAY SALE

17 - 18 NOVEMBER 2022 | NEW YORK

PROCEEDS BENEFITTING THE THOMAS AND DORIS AMMANN FOUNDATION



BRICE MARDEN (B. 1938)  
*Free Painting 2*  
oil and graphite on canvas, in six parts  
each: 24 x 18 in. (61.5 x 46 cm.)  
overall: 24 x 108 in. (61 x 274.5 cm.)  
Painted in 2017.  
\$4,000,000-6,000,000  
20<sup>th</sup> Century Evening Sale



ROBERT RYMAN (B. 1930-2019)  
*Untitled [Winsor]*  
Winsor White oil on stretched sized linen canvas  
76 x 76 in. (193 x 193 cm.)  
Executed in 1966.  
\$6,000,000-8,000,000  
20<sup>th</sup> Century Evening Sale

**New York** – Following the successful inaugural collection sale in May 2022, Christie's is thrilled to announce a group of 26 contemporary masterworks from **The Collection of Thomas and Doris Ammann** that will be sold during the Fall Marquee Week in the 20<sup>th</sup> and 21<sup>st</sup> Century Evening Sales and the Post-War and Contemporary Art Day Sale on Thursday, 17 November and Friday, 18 November at Rockefeller Center. The group features works by leading names of post-war and contemporary art including **Andy Warhol**, **Jean-Michel Basquiat**, **Robert Ryman**, **Brice Marden** and **Francesco Clemente**. All proceeds of the collection will benefit the Thomas

and Doris Ammann Foundation Zurich, which is dedicated to improving the lives of children all over the world by supporting organizations and institutions centered on providing healthcare and educational programs.

Among the exemplary highlights that will be offered in the 20<sup>th</sup> Century Evening Sale is Robert Ryman's *Untitled [Winsor]* (\$6,000,000-8,000,000), which demonstrates the artist's rigorous and intellectual interrogation of the painterly process. Painted in 1966, when the artist was refining his disciplined approach to the structure of painting, Ryman reduced his canvases to their most essential elements: paint and support. Rejecting traditional ideas of paint acting as a signifier, he removed all traces of color to leave a surface that focuses on the inherent physical qualities of his materials – texture, density, light and reflectivity. Constructed of short strokes applied with supple ease and fluidity, they are typical in his works from this period in which he investigated the various aesthetic effects of different types of brushes and lengths of strokes. Ryman was one of the Ammann's favorite artists, and an example of the painters they privately collected in depth.

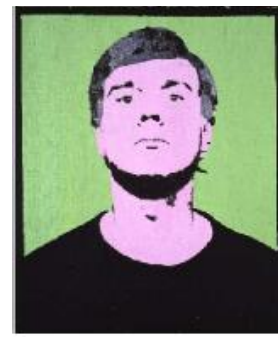
Surface also played a pivotal role in the work of Brice Marden, as seen in his 2017 canvas, *Free Painting 2* (\$4,000,000-6,000,000) another highlight of the 20<sup>th</sup> Century Evening Sale. Its minimalist appearance belies the tender, hand-made quality of the artist's paintings, and the subtle, time-consuming nature of their creation. In this work, we can see both, demonstrated in the highly finished blocks of color that dominate the upper portion of the canvas, and the delicate drips and painterly trails that occupy the lower section.



ANDY WARHOL (1928-1987)  
*Hammer and Sickle*  
acrylic and silkscreen ink on linen  
72 x 86 in. (182.9 x 218.4 cm.)  
Painted in 1976  
\$4,000,000-6,000,000  
20<sup>th</sup> Century Evening Sale



ELAINE STURTEVANT (1926-2014)  
*Johns Big Figure Five (Study)*  
encaustic and collage on canvas  
48 x 36 in. (122 x 91.5 cm.)  
Painted in 1987  
\$300,000-500,000  
Post War & Contemporary Day Sale



ANDY WARHOL (1928-1987)  
*Self-Portrait*  
acrylic, silver paint and silkscreen ink on linen  
20 x 16 1/2 in. (50.8 x 41.9 cm.)  
Painted in 1964  
\$3,000,000-5,000,000  
20<sup>th</sup> Century Evening Sale

The 20<sup>th</sup> Century Evening Sale will be highlighted by two additional Warhols made over a decade apart: *Self Portrait* (\$3,000,000-5,000,000) from 1964 *Hammer and Sickle* (\$4,000,000-6,000,000) from 1976. Known to be quite private, Warhol's self-portraits are among his most insightful works. The example on offer featuring the artist postured quite proudly, asserting a notoriety and confidence that would manifest throughout the years as his fame continued to skyrocket.

In the 1970s, Warhol's hammer and sickle paintings were among his most notable. Both utilitarian objects and politically charged symbols, the two forms fascinated Warhol. He bought a hammer and sickle in a hardware store and photographed them, then further developed the series into paintings. The two Warhols on offer in the 20<sup>th</sup> Century Evening Sale are both standout representations of the artist's body of work from the 1960s and 1970s—beautiful, intimate, and reflective the close personal relationship that Warhol had with Thomas Ammann.

Another collection highlight is *Johns Big Figure Five (Study)* by Sturtevant (\$300,000-500,000), which will be sold in the Post-War and Contemporary Art Day Sale on 18 November. This painting comes from a moment when artists began to questioning the larger construct of the concept of art. In this work, a female artist is revisiting an iconic series from a male artist of the previous generation, both celebrating Johns's vision and challenging his formal investigation into numerical figures. This painting marks a post-modern returning to one of the great series of post-war art, invigorating it with youthful exuberance and investigating new premises of how art is defined. Together, the selection of contemporary pieces from The Collection of Thomas and Doris Ammann speak to visceral and cerebral notions of art, questioning the very ethos of what art is—and what can it be?

## 20/21: [Full Schedule of Sales](#)

### PRESS CONTACT:

Jessica Stanley | [jstanley@christies.com](mailto:jstanley@christies.com) | 212 636 2680

### About Christie's

Founded in 1766, Christie's is a world-leading art and luxury business. Renowned and trusted for its expert live and online auctions, as well as its bespoke private sales, Christie's offers a full portfolio of [global services](#) to its clients, including art appraisal, art financing, international real estate and education. Christie's has a physical presence in 46 countries, throughout the Americas, Europe, Middle East, and Asia Pacific, with flagship [international sales hubs](#) in New York, London, Hong Kong, Paris and Geneva. It also is the only international auction house authorized to hold sales in mainland China (Shanghai).

Christie's [auctions](#) span more than [80 art and luxury categories](#), at price points ranging from \$200 to over \$100 million. In recent years, Christie's has achieved the world record price for an artwork at auction ([Leonardo da Vinci's Salvator Mundi](#), 2017), for a 20th century artwork ([Andy Warhol's Shot Sage Blue Marilyn](#), 2022) and for a work by a living artist ([Jeff Koons' Rabbit](#), 2019). Christie's is also recognised as a reference for prestigious single owner collections, having auctioned 8 of the 10 most important collections in history.

Christie's [Private Sales](#) offers a seamless service for buying and selling art, jewellery and watches outside of the auction calendar, working exclusively with Christie's specialists at a client's individual pace.

Recent innovations at Christie's include groundbreaking sale of the first NFT for a digital work of art ever offered at a major auction house ([Beeple's Everydays, March 2021](#)), with the unprecedented acceptance of cryptocurrency as a means of payment. As an industry leader in digital innovation, Christie's also continues to pioneer new technologies that are redefining the business of art, including the use of hologram technology to tour life-size 3D objects around the world, and the creation of viewing and bidding experiences that integrate augmented reality, global livestreaming, buy-now channels, and hybrid sales formats.

Christie's is dedicated to advancing [responsible culture](#) throughout its business and communities worldwide, including achieving sustainability through net zero carbon emissions by 2030, and actively using its platform in the art world to amplify under-represented voices and support positive change.

Browse, bid, [discover](#), and join us for the best of art and luxury at: [www.christies.com](http://www.christies.com) or by downloading Christie's apps.

*\*Please note when quoting estimates above that other fees will apply in addition to the hammer price - see Section D of the Conditions of Sale at the back of the sale catalogue.*

*\*Estimates do not include buyer's premium. Sales totals are hammer price plus buyer's premium and are reported net of applicable fees.*

###

**FOLLOW CHRISTIE'S ON:**

