

# CHRISTIE'S

PRESS RELEASE | LONDON

FOR IMMEDIATE RELEASE: Wednesday, 17 December 2014

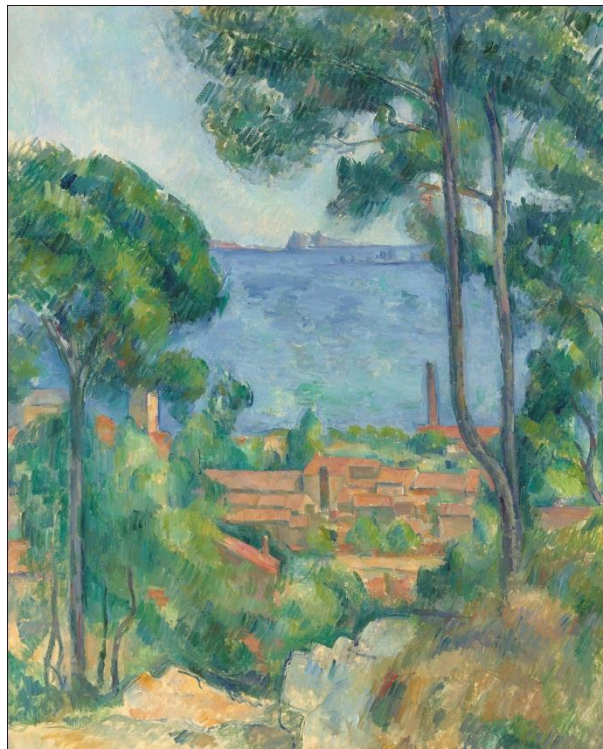
CHRISTIE'S PROUDLY ANNOUNCES A MASTERPIECE BY

PAUL CÉZANNE

*Vue sur L'Estaque et Le Château d'If*

FROM THE COLLECTION OF SAMUEL COURTAULD

London, 4 February 2015



**London** – Christie's is proud to announce the sale of a masterpiece by Paul Cézanne, *Vue sur L'Estaque et Le Château d'If*, which comes to the market for the first time since it was acquired in 1936 by Samuel Courtauld, the founder of the illustrious Courtauld Gallery and Institute of Art in London (estimate: £8-12 million). The painting remained in Courtauld's private collection throughout his lifetime and following his generous bequest to the Courtauld Gallery. One of the leading highlights of the *Impressionist & Modern Art Evening Sale* on 4 February 2015, this magisterial work was painted *circa* 1883-1885, during one of the last visits that Cézanne ever made to L'Estaque, a fishing port and small seaside resort in his native Provence, where he sought inspiration repeatedly from the mid-1860s. This is a rare example on a vertical canvas of Cézanne's treatment of this iconic motif; the format lends the composition stately dignity and remarkable concentration of colour and form.

**Jay Vincze, International Director and Head of The Impressionist and Modern Art Department, Christie's London:** *"The exceptional quality, rarity and freshness of *Vue sur L'Estaque et Le Château d'If* provides collectors and institutions around the world with a once in a generation opportunity to secure an important and very beautiful masterpiece"*

*landscape by Cézanne. Acquired in 1936 by one of the 20<sup>th</sup> century's greatest connoisseurs, the inspirational patron of the arts and generous philanthropist Samuel Courtauld, the provenance of this outstanding painting is exemplary. His legacy through the Courtauld Gallery and Institute continues to enrich and inform contemporary culture today and his early recognition of Cézanne's genius gave rise to the greatest public collection of the artist's work in Britain. We expect this painting to create great excitement internationally, from discerning buyers - both new and established - across Asia and Russia to Europe and America."*

The splendid panorama – captured in *Vue sur L'Estaque et Le Château d'If* - from the hilltop above the town, looking over the rooftops toward the bay of Marseille and the distant islands of Frioul, provided the basis for some of the most innovative landscapes of Cézanne's career, in which he fully realised his goal to "make of Impressionism something solid and enduring like the art in museums."

The stable and harmonious distribution of forms within the composition, with broad horizontal bands of land, sea, and sky framed by majestic pine trees, is profoundly indebted to the classical landscape tradition of Poussin, which Cézanne used to organise his sensations before nature. At the same time, Cézanne's constructive transformation of the townscape into an architectural geometry of flat, overlapping planes is powerfully modern, as the next generation of the avant-garde would recognise. "The discovery of his work overturned everything," exclaimed Braque, who traveled to L'Estaque repeatedly during the formative years of cubism.

*Images available on request*  
Visit Christie's Website at [www.christies.com](http://www.christies.com)

**PRESS CONTACT: Hannah Schweiger | +44 (0)207 389 2964 | [hschweiger@christies.com](mailto:hschweiger@christies.com)**

London: 17 December, 2014

Taipei: 19-20 January, 2015

London - full pre-sale exhibition: 30 January – 4 February, 2015